



**INTERNATIONAL
SAMBO FEDERATION**

**FIAS SPECIFICATION SHEET
FOR SAMBO UNIFORM
MANUFACTURING**

2022



APPROVED by
FIAS Executive Committee
November 20, 2014
APPROVED with changes by
FIAS Executive Committee
March 20, 2020
APPROVED with changes by
FIAS Executive Committee
April 20, 2022



I. GENERAL PROVISIONS	4
II. TECHNOLOGICAL REQUIREMENTS FOR SAMBO UNIFORM MANUFACTURING	5
2.1 Jacket	5
2.1.1 Appearance	5
2.1.2 Fabric characteristics	5
2.1.3 Structural features	6
2.1.4 Sizes	7
2.2 Belt	7
2.2.1 Appearance	7
2.2.2 Fabric characteristics	7
2.2.3 Structural features	7
2.2.4 Sizes	7
2.3 Shoes	8
2.3.1 Appearance	8
2.3.2 Fabric characteristics	8
2.3.3 Structural features	9
2.3.4 Sizes	9
2.4 Shorts	9
2.4.1 Appearance of shorts for sports SAMBO	9
2.4.2 Fabric characteristics	10
2.4.3 Structural features	10
2.4.4 Sizes	10
2.4.5 Appearance of shorts for combat SAMBO	11
2.4.6 Fabric characteristics	11
2.4.7 Structural features	11
2.4.8 Sizes	12
2.5 T-shirt (for women)	12
2.5.1 Appearance	12
2.5.2 Fabric characteristics	12
2.5.3 Structural features	13
2.5.4 Sizes	13
III. REQUIREMENTS FOR LOGOS PLACEMENT ON SAMBO UNIFORM	13
3.1 Requirements for manufacturer's logos	13
3.2 Requirements for FIAS conformity mark	14
ANNEX 1	16
ANNEX 2	17
ANNEX 3	18

Analysis of FIAS sports events shows an increase in modern SAMBO indicators (number of member countries and participants of events, level of preparation and organization of events, etc.). However, there are still many issues that remain urgent.

The most important one is about SAMBO uniform, particularly, there is a need to develop unified international standards for uniform and establish regulatory and legal framework for manufacturing, licensing and sale thereof.

The purpose of this project is to develop unified international requirements for SAMBO uniform manufacturing.

I. GENERAL PROVISIONS

Official documents approved by FIAS Executive Committee (Regulations and SAMBO Rules) contain key terms related to SAMBO uniform.

Thus, Uniform means athlete's clothing and gear necessary for training and participation in contests. (Chapter 1, Clause 1 of the Regulations of FIAS on Organizing and Holding Official FIAS Competitions (Sports and Organizational Rules), hereinafter referred to as "FIAS Regulations"). SAMBO uniform is described in FIAS Regulations (Chapter 16, Clause 16.1) as well, according to which:

1. Uniform of Sambo competition participant includes:

- SAMBO jacket;
- SAMBO shoes;
- SAMBO shorts.

Besides, the male participants may wear a protective athletic bandage (groin-guards) and females may wear the bra and t-shirt (the t-shirt shall be single-colored white);

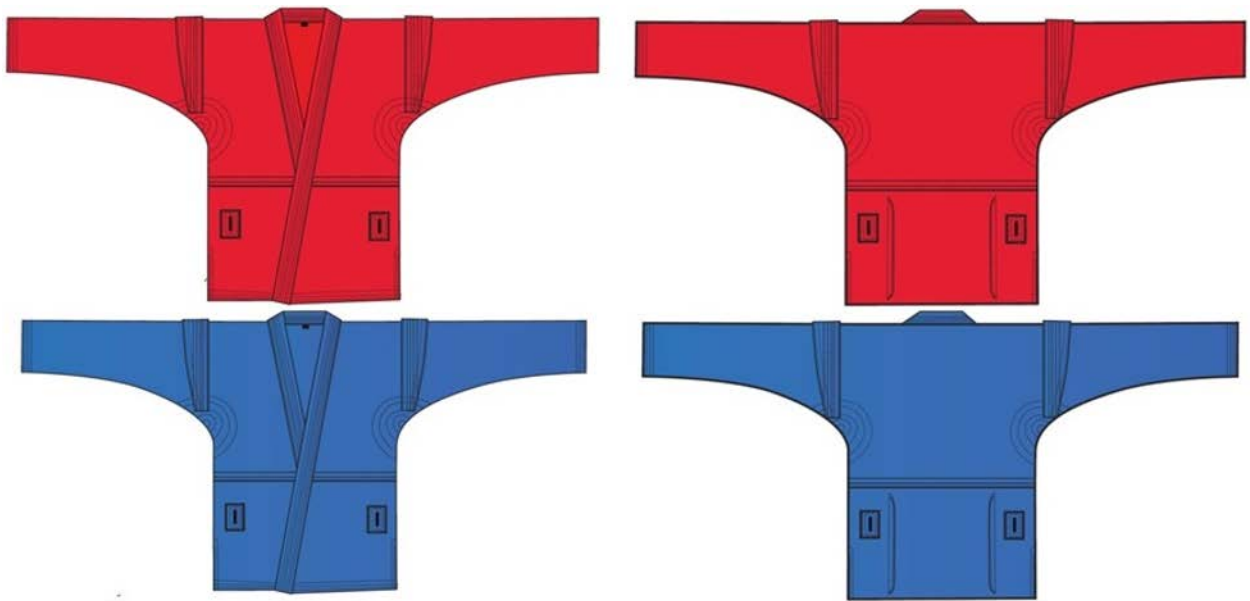
2. For all official FIAS SAMBO competitions, uniform of a participant and the whole gear must be of one color - either red or blue. The color of SAMBO shoes may be combined (blue and red). Uniform control referees shall ensure such compliance.

3. Uniform size compliance is verified by uniform control referees who use a special tool in accordance with FIAS competition rules.

II. TECHNOLOGICAL REQUIREMENTS FOR SAMBO UNIFORM MANUFACTURING

2.1 Jacket

2.1.1 Appearance

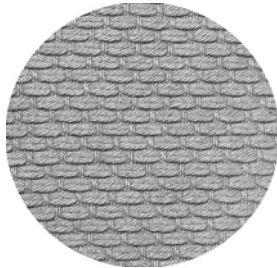


2.1.2 Fabric characteristics

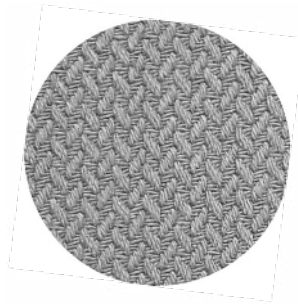
- a) material: cotton, synthetic, or combined fabric;
- b) breathable;
- c) (GSM) density: not less than 500 but not more than 700 g/m²;
- d) (Warp/Weft Density) durability: 22 +44 * 20 pcs./inch;
- e) shrinkage <4%;
- f) color (PANTONE international standards):
 - i. red (PANTONE18 -1662TPX (Flame Scarlet));
 - ii. blue (PANTONE18 -4051TPX (Strong Blue));
- g) color permanence: high;
- h) wear resistance: high;

i) cloth texture is homogeneous dense double twisted thread.

There can be two types of textures:



«Rice Grain»



«Herringbone»

2.1.3 Structural features

SAMBO jacket consists of two pieces of fabric with a wrap, without lining.

- a) the upper part of the jacket is made from one piece of fabric;
- b) the collar is stiff, made from one piece of fabric: width 4-5 cm, 5 rows of stitching;
- c) special shoulder “wing” panels are made of twice-folded main fabric: width is 2-3 cm on edges, and 5-6 cm in the midst, with 4-5 rows of stitching;
- d) the lower part of the jacket is made from one piece of fabric, has holes and cuts:
 - i. there are holes on the waist line for a belt (2 on front panel, 2 on back panel): hole width is 0.5-1 cm, height 5 cm;
 - ii. cuts go half way up the side lines (of the lower part of a jacket).
- e) reinforced (strengthened) jacket parts (Appendix 1):
 - i. there is an oval patch on the arm-holes made of main fabric, stitched from the inside;
 - ii. side slits bottom of the jacket are reinforced by the strip of the main fabric and sewn on the inside - width 1-2.5 cm, at least 3 rows of stitching;
 - iii. edge of the sleeves and bottom of jacket are reinforced by the strip or by tucking the main fabric - width 2 cm, at least 2 rows of stitching;
 - iv. the upper and lower parts of the jacket are stitched together using the “lock” seam or special banding from the inside, width: 1.5-2.5 cm, at least 3 rows of stitching;
 - v. slits for a belt are reinforced with a square patch from the outside: width 1.5-2 cm larger than each side of the slit, at least 3 rows of stitching.

The basic configuration of the SAMBO jacket seams is presented in Appendix 2.

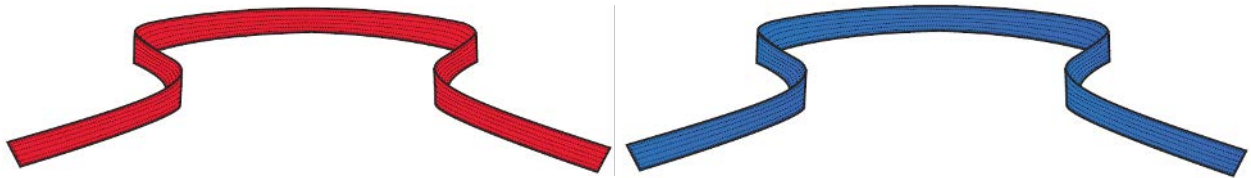
2.1.4 Sizes

SAMBO jacket shall correspond to international standard clothing sizes for men.

US Size		SS		XS		S		M		L		XL		XXL		3XL		4XL		5XL		6XL
EU Size		42		44		46		48		50		52		54		56		58		60		62
Height (cm)		150		155		160		165		170		175		180		185		190		195		200

2.2 Belt

2.2.1 Appearance



2.2.2 Fabric characteristics

- a) material: cotton, synthetic, or combined fabric;
- b) (GSM) density: not less than 500 but not more than 700 g/m²;
- c) (Warp/Weft Density) durability: 22 + 44 * 20 pcs. / inch;
- d) shrinkage <4%;
- e) color (PANTONE international standards):
 - i. red (PANTONE18 -1662TPX (Flame Scarlet));
 - ii. blue (PANTONE18 - 4051TPX (Strong Blue));
- f) color permanence: high;
- g) wear resistance: high;
- h) cloth texture is homogeneous dense double twisted thread.

2.2.3 Structural features

SAMBO belt is made of one piece of main fabric (same as the jacket). The width of a finished belt is 4-5 cm. The band of fabric is folded 3-4 times. The belt has 6-8 rows of stitching along its length, placed 0.5 cm from each other.

The configuration of the seams on the jacket SAMBO presented in Appendix 2.

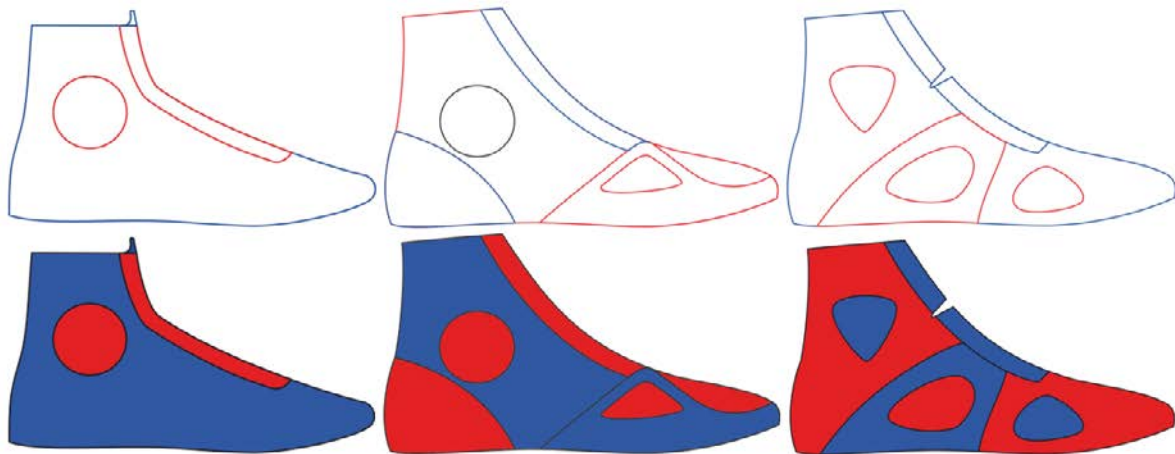
2.2.4 Sizes

Belts for SAMBO jackets shall correspond to SAMBO jacket sizes.

US Size		SS		XS		S		M		L		XL		XXL		3XL		4XL		5XL		6XL
EU Size		42		44		46		48		50		52		54		56		58		60		62
Height (cm)		250		255		260		265		270		275		280		285		290		295		300

2.3 Shoes

2.3.1 Appearance



2.3.2 The characteristic of the fabric and the choice of materials used for the production of SAMBO shoes, are determined by the manufacturer. It is necessary to consider the FIAS requirements, the main of which are:

- a) color (PANTONE international standards):
 - i. red (PANTONE18 -1662TPX (Flame Scarlet);
 - ii. blue (PANTONE18 - 4051TPX (Strong Blue);
- b) shrinkage <4%;
- c) color permanence: high;
- d) wear resistance: high;

2.3.3 Structural features

Design features of the SAMBO shoes are determined by the manufacturer, but

it is necessary to consider the FIAS requirements, the main of which are:

- a) ready-to-wear model shall be anatomic, light, soft, without any rough, coarse or protruding elements and seams;
- b) all seams shall be closed up inside;
- c) ankles shall be protected by small felt pads;
- d) boot-top height shall be 7-10 cm from the lower part of the lateral (external) part of the ankle;
- e) boot-top form may be straight or oblique;
- f) after lacing the shoes, boot-top must be tightly fitted around the ankles;
- g) tongue height shall not exceed the height of boot-top by more than 1 cm;
- h) shoes must be made in combined color (red and blue).

2.3.4 Sizes

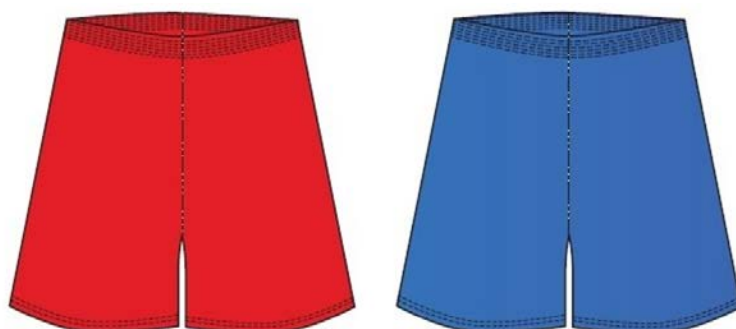
SAMBO shoes shall correspond to international standard shoe sizes for men.

US Size | 3 | 4 | 5 | 6 | 7 | 8 | 9 | 10 | 11 | 12 | 13

EU Size | 35 | 36 | 37 | 38 | 40 | 41 | 42 | 44 | 45 | 46 | 47

2.4 Shorts

2.4.1 Appearance for sports SAMBO:



2.4.2 Fabric characteristics:

- a) material: 100% synthetic fabric;
- b) durability: high;

- c) breathability: high;
- d) shape stability: high;
- e) color (PANTONE international standards):
 - i. red (PANTONE18 -1662TPX (Flame Scarlet);
 - ii. blue (PANTONE18 - 4051TPX (Strong Blue);
- f) color permanence: high;
- g) wear resistance: high;
- h) fabric texture is homogeneous, dense, breathable, water absorbing, with great elasticity, preserves its shape, does not crease.

2.4.3 Structural features

Design features of the SAMBO shorts are determined by the manufacturer, but it is necessary to consider the FIAS requirements, the main of which are:

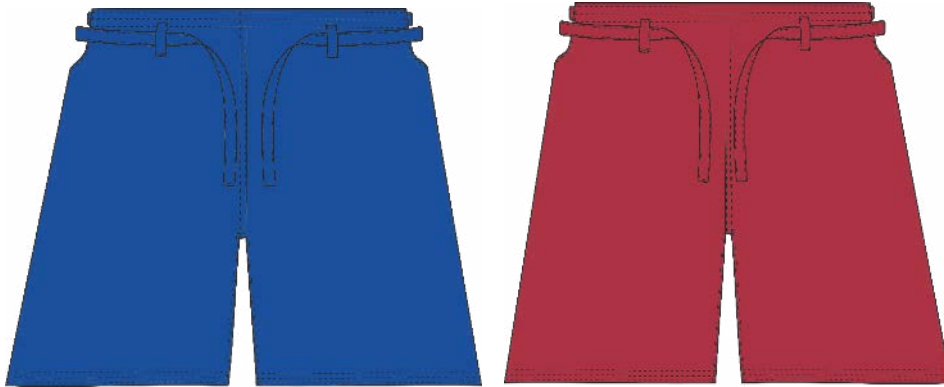
- a) shorts shall be slim-lined; they should not constrain any movement;
- b) shorts shall have an adjustable drawcord;
- c) all seams shall be closed up inside, internal finishing – overlock;
- d) cover-seaming shall be used for hems;
- e) holes are finished using buttonhole machine;
- f) length of shorts is mid-thigh;
- g) to sew additional elements (stripes, inserts, drawings, inscriptions) on shorts is prohibited.

2.4.4 Sizes

SAMBO shorts shall correspond to international standard clothing sizes for men.

US Size		SS		XS		S		M		L		XL		XXL		3XL		4XL		5XL		6XL
EU Size		42		44		46		48		50		52		54		56		58		60		62
Height (cm.)		150		155		160		165		170		175		180		185		190		195		200

2.4.5 Appearance for combat SAMBO:



2.4.6 Fabric characteristics:

- a) material: cotton, synthetic, or combined fabric;
- b) durability: high (able to withstand grabs for shorts);
- c) color (PANTONE international standards):
 - i. red (PANTONE18 -1662TPX (Flame Scarlet));
 - ii. blue (PANTONE18 - 4051TPX (Strong Blue));
- d) color permanence: high;
- e) wear resistance: high;
- f) fabric texture is homogeneous, dense, strong, inelastic.

2.4.7 Structural features

Design features of the SAMBO shorts are determined by the manufacturer, but it is necessary to consider the requirements of the FIAS, the main of which are:

- a) shorts shall be free, they should not constrain any movement;
- b) in length, the shorts reach to the middle of the thigh;
- c) the belt of the shorts is tightened with a cord from the main fabric;
- d) due to the fact that in combat SAMBO grabs for shorts are allowed, it is necessary to reinforced (strengthened) the details of the shorts:
 - i. there is an rhombus patch on the armhole of the legs made of main fabric;
 - ii. the bottom edge of the shorts are reinforced by the strip of the main fabric and sewn on the inside - width 2-3 cm, at least 3 rows of stitching;
 - iii. all parts of the shorts are stitched together using the “lock” seam or special

banding from the inside, width: 1.5-2 cm, at least 3 rows of stitching;

iv. loops for the cord are made from the main fabric (sewn by bending the main fabric with a width - to 1 cm., at least 2 of the sewing lines).

e) sew on shorts additional elements (stripes, inserts, drawings, inscriptions) is prohibited.

The configuration of the seams on the combat SAMBO shorts presented in Annex 2.

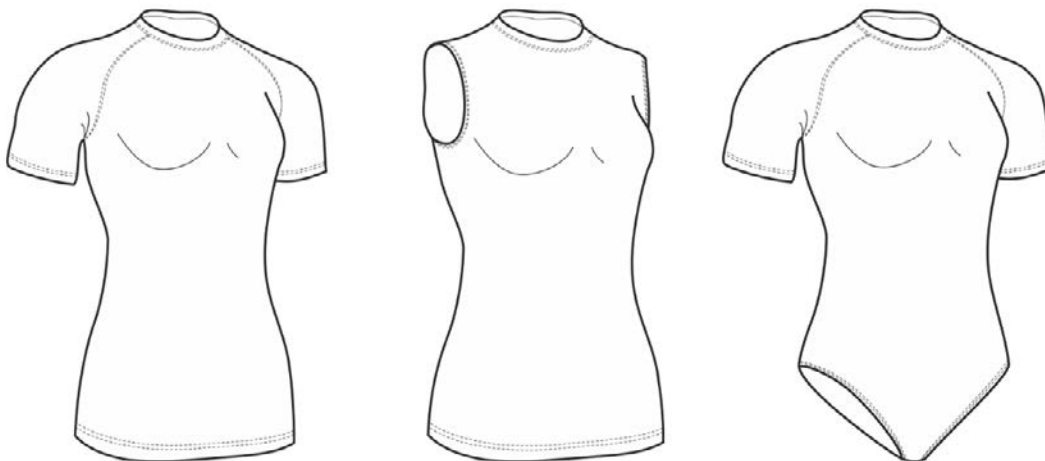
2.4.8 Sizes

Combat SAMBO shorts shall correspond to international standard clothing sizes for men.

US Size		SS		XS		S		M		L		XL		XXL		3XL		4XL		5XL		6XL
EU Size		42		44		46		48		50		52		54		56		58		60		62
Height (cm.)		150		155		160		165		170		175		180		185		190		195		200

2.5 T-shirt (for women)

2.5.1 Appearance:



2.5.2 Fabric characteristics:

- a) material: synthetic fabric;
- b) color (PANTONE international standards):
 - i. white (PANTONE11-0601 (White));

- c) color permanence: high;
- d) fabric texture is homogeneous, dense, air-permeable, water absorbing, with great elasticity, preserves its shape, does not crease.

2.5.3 Structural features

Design features of the t-shirt are determined by the manufacturer, but it is necessary to consider the FIAS requirements, the main of which are:

- a) the fit should be tight-fitting, anatomical, without rough seams;
- b) all seams and folds on the treated interlock machine;
- c) width of t-shirt collar is 1-2 cm.;
- d) t-shirt can be made in the usual style or type of body without sleeve or short sleeve;
- e) if the t-shirt has the type of body, the buckle must be in the form of hook and loop fasteners (VELCRO).

2.5.4 Sizes

T-shirt shall correspond to international standard clothing sizes for women.

US Size | SS | XS | S | M | L | XL | XXL

EU Size | 42 | 44 | 46 | 48 | 50 | 52 | 54

III. REQUIREMENTS FOR LOGOS PLACEMENT ON SAMBO UNIFORM

The manufacturer shall place its own logo and FIAS conformity mark on SAMBO jacket, shorts, shoes and t-shirt in strict compliance with the present Document.

3.1 Requirements for manufacturer's logos placement

3.1.1 Main requirements for placement of manufacturer's

logo on SAMBO uniform are as follows:

- a) manufacturer's logo shall be placed on the front left side of the SAMBO jacket at the bottom right of the snip;
- b) manufacturer's logo shall be placed on the SAMBO belt from one end, located in the center across the width of a lapel;
- c) manufacturer's logo shall be placed on the SAMBO shorts at the front in the lower left part, near the side seam;
- d) manufacturer's logo shall fit the circle pads in the ankle area on the inside of a shoe;
- e) manufacturer's logo shall be placed on the t-shirt, at the chest, on the left side.

3.1.2 The manufacturer's logo must be made of non-toxic materials, in the form of sublimation, transfer printing, screen printing, embroidery or other method of application, have a high wear resistance and no sharp, rough elements that may cause damage. On the t-shirt, the manufacturer logo must be made only by a sublimation method.

3.1.3 Logo shall be placed vertically or horizontally.

3.1.4 The size of the logo area must not exceed 18 cm².

3.1.5 The principle of applying manufacturer's logo on the SAMBO uniform is shown in Annex 3.

3.2 Requirements for FIAS conformity mark placement

3.2.1 Main requirements for placement of FIAS conformity mark on SAMBO uniform are as follows:

- a) on the jacket conformity mark shall be placed on the end (bottom) of the left lapel;
- b) on the belt conformity mark shall be placed at on one end and on the same side (surface) as a manufacturer logo;
- c) on the shorts conformity mark shall be placed on the top, on the right side near the side seam;
- d) on the shoes conformity mark should be placed on the «tongue» of both shoes in the upper part, centered;
- e) on the t-shirt conformity mark shall be placed on the top, on center back below the collar.

3.2.2 The FIAS conformity mark must be made of non-toxic materials, in the form of sublimation, transfer printing, screen printing, embroidery or other method of application,



have a high wear resistance and no sharp, rough elements that may cause damage. On the t-shirt, the FIAS conformity mark must be made only by a sublimation method.

3.2.3 The principle of applying FIAS conformity mark on the SAMBO uniform is shown in Annex 3.

APPENDIX 1

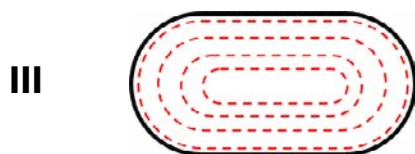
Strengthening (reinforcement) details of the jacket using the main fabric and reinforced stitching lines.



I Special bar «wings» are attached to the jacket from the **outside**. «Wings» are sewn on three sides, by reinforced sewing stitch.



II Slits for belt are amplified with rectangular patch and fastened to the jacket **outside**. They are sewn along the perimeter by reinforced sewing lines.




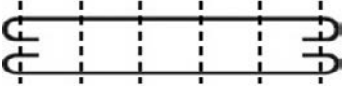
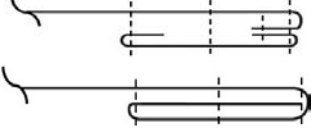
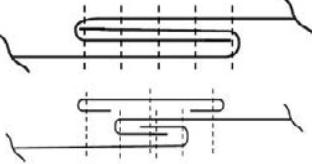

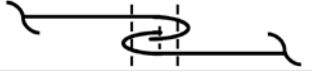
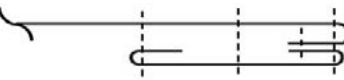
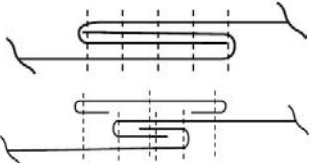

III Oval patches are attached to the jacket from the inner side in the area of the armhole. They are sewn by perimeter by reinforced sewing lines.



IV Incisions in the lateral line of jackets, amplified from the inside by the strip of the main fabric. They are sewn by perimeter by reinforced sewing lines.

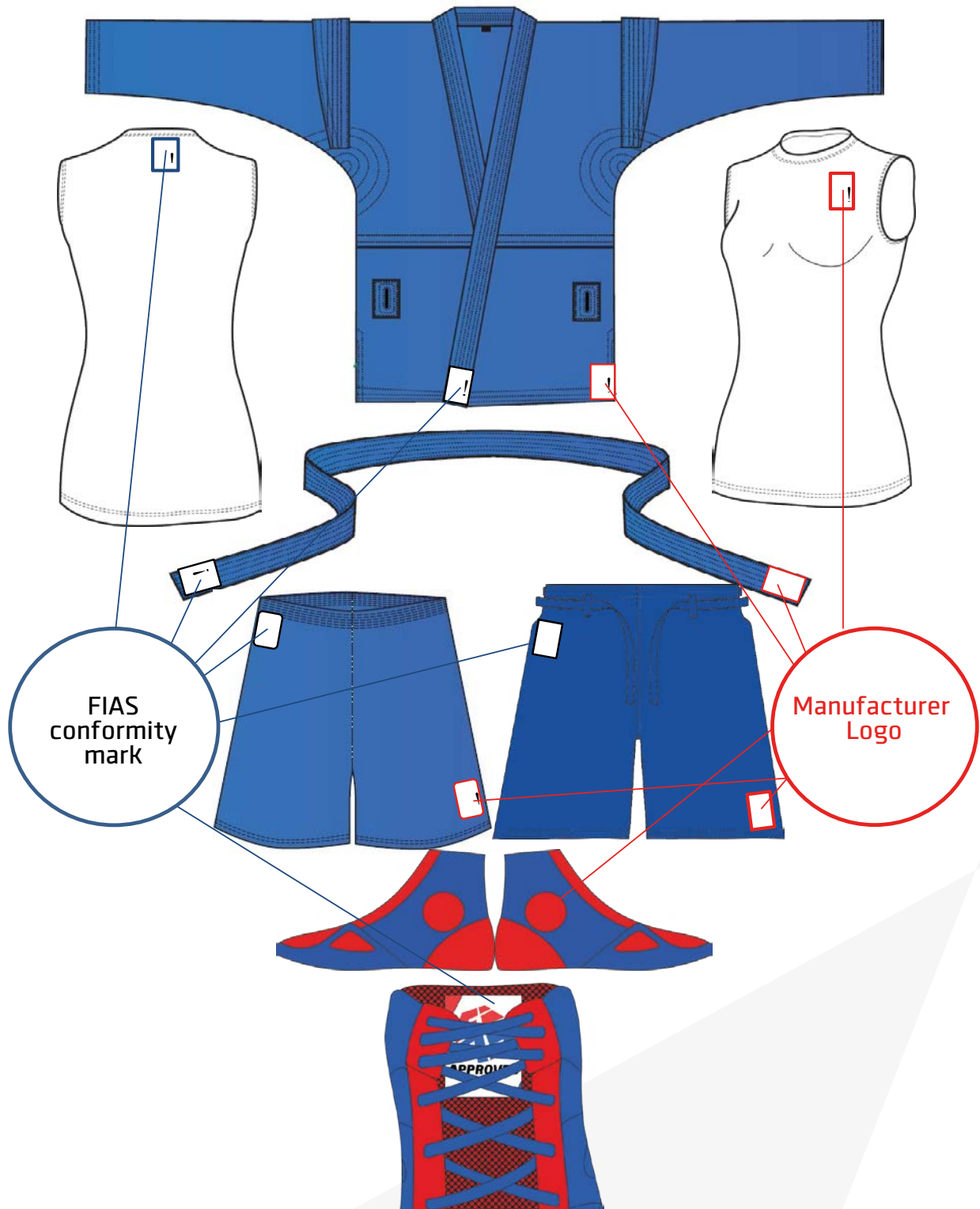
ANNEX 2

Configuration seam detail on SAMBO jacket, SAMBO belt and combat SAMBO shorts

Seam Configuration	Seam Purpose
	<p>For sewing collar SAMBO jacket. The width of the gate 4-5 cm., has 5-7 sewing lines.</p>
	<p>For sewing «wings». Made from the main fabric in two layers. Width 2-3 cm. with all, and 5-6 cm. in the middle, has 4-6 sewing lines.</p>
	<p>Edge of the sleeves and bottom of jacket are reinforced by the strip of the main fabric or tucking the main fabric and sewn on the inside - width 1-2 cm, at least 2 rows of stitching.</p>
	<p>The upper and lower parts of the jacket are stitched together using the “lock” seam or special banding from the inside, width: 1.5-2.5 cm, at least 3 rows of stitching. The band of fabric is folded 3-4 times.</p>
	<p>For sewing beach SAMBO belt. The band of fabric is folded 3-4 times, width: 6-8 rows of stitching along its length, placed 0.5 cm from each other.</p>
	<p>For stitching sleeveless length. The width of 1-1,5 cm., at least 2 of the sewing lines.</p>
	<p>The bottom edge of the shorts are reinforced by the strip of the main fabric and sewn on the inside - width 2-3 cm, at least 3 rows of stitching.</p>
	<p>All parts of the shorts are stitched together using the “lock” seam or special banding from the inside, width: 1.5-2 cm, at least 3 rows of stitching.</p>
	<p>Loops for the cord are made from the main fabric (sewn by bending the main fabric with a width - to 1 cm., at least 2 of the sewing lines).</p>

APPENDIX 3

The principle of FIAS conformity mark and manufacturer logos placement on the SAMBO uniform





WWW.SAMBO.SPORT